

COVID-19 Screening Questions

This screening tool is intended for those who are seeking medical advice regarding COVID-19.

If a patient calls a physician's office and is symptomatic or has had suspected contact with the virus, complete the screening algorithm, beginning with the COVID-19 Screening Questions below with the patient. If the patient is severely ill and requires emergency medical attention, they should call 911. Please advise them to notify 911 of their potential exposure to COVID-19.

Patients can also complete the self-assessment screening tool online: <https://www.811healthline.ca/covid-19-self-assessment/>

If an individual is being investigated for COVID-19, meaning testing has occurred or they are a close contact to a case, the individual should self-isolate while waiting for test results.

Following screening, if it is determined the patient should self-isolate and be referred to public health for COVID-19 testing, priority-testing appointments will be provided to individuals working in essential services. If the patient works in the following areas, advise them to inform the public health official (voicemail if necessary) they are an essential worker. Essential workers include:

- Individuals working in healthcare (hospital, long term care, personal care home, home support, paramedicine, first responders), coast guard, RNC, RCMP, fire, correctional facility, transport of essential goods, grocery stores.
- Individuals that work in or attend a daycare, emergency shelters, transition house or other housing programs serving vulnerable populations.

It is important to note this is not an exhaustive list. Professional judgment should be used in determining if a caller should be considered an essential worker.

COVID-19 Screening Questions

Question 1: Does the caller have **two or more** of the following symptoms (new or worsening):

Fever (or signs of a fever such as chills, sweats, muscle aches and lightheadedness), cough, headache, sore throat, painful swallowing, runny nose, unexplained loss of appetite/diarrhea, loss of sense of smell or taste

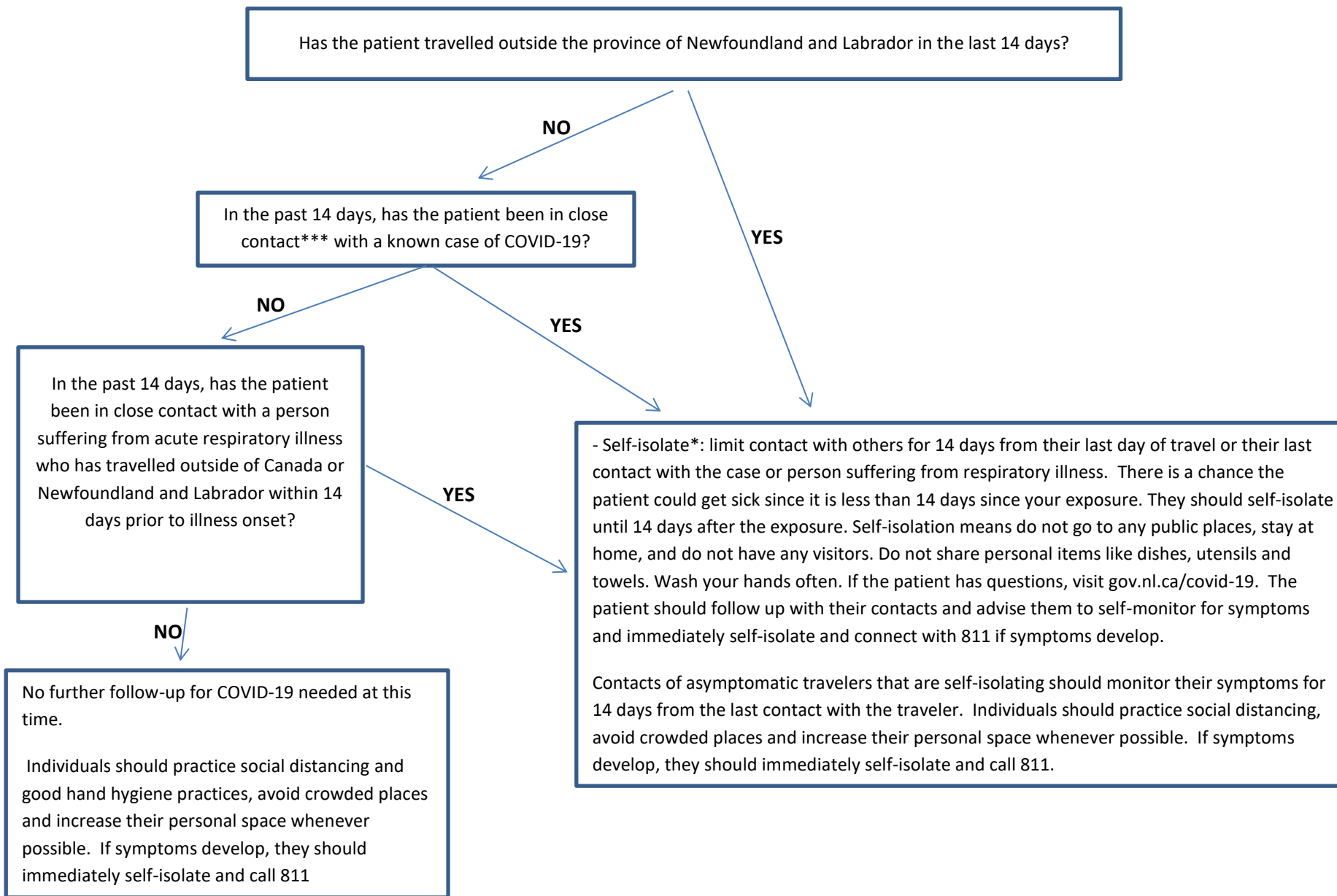
OR

experiencing chilblain-like lesions on their feet and/or hands?

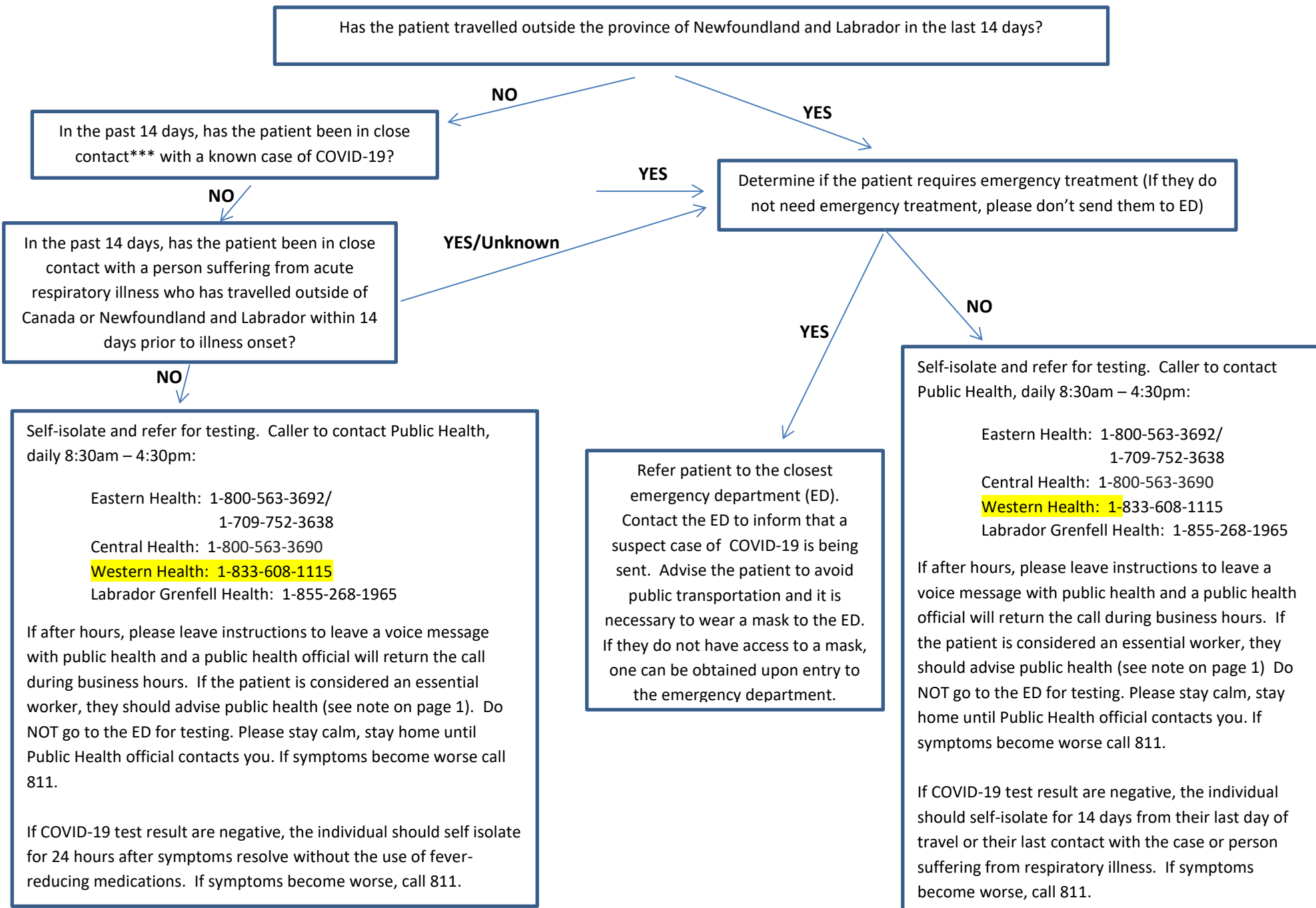
If **no**, use screen algorithm 1

if **yes**, use screening algorithm 2

Screening Algorithm 1 - No symptoms



Screening Algorithm 2 - Has symptoms



*Steps for self-isolation include:

- do not have face-to-face contact with individuals with chronic conditions, compromised immune systems and senior citizens;
- do not have visitors to your home;
- do not attend/visit social gatherings, work, school, daycare, health care facilities and seniors residences;
- do not take public transit, taxis or share rides ;
- wash hands often with soap and warm water frequently for at least 20 seconds; and
- cover mouth and nose with your arm when coughing or sneezing;
- If you have symptoms, isolate within household, for example: separate bedroom, separate bathroom if possible, limit contact with other household members, maintain 2 metres (6 feet) of distance between people as much as possible, routine cleaning of high touch surfaces, regular hand washing, respiratory etiquette (cover/contain cough and sneezes).

**self-monitoring includes: Self-monitor for symptoms for 14 days following their last contact.

- Self-isolation (see above) is not required.
- Self-isolate as quickly as possible should symptoms develop, and contact 811 or visit our website gov.nl.ca/covid-19 to complete self-assessment.
- Avoid crowded public spaces and places where rapid self-isolation upon onset of symptoms may not be feasible. Examples of crowded public spaces and places include mass gatherings, such as concerts and sporting events.

***A close contact is defined as a person who:

- provided care for the individual, including healthcare workers, family members or other caregivers, or who had other similar close physical contact without consistent and appropriate use of personal protective equipment OR
- who lived with or otherwise had close prolonged contact (within 2 meters) with the person while they were infectious OR
- had direct contact with infectious bodily fluids of the person (e.g. was coughed or sneezed on) while not wearing recommended personal protective equipment